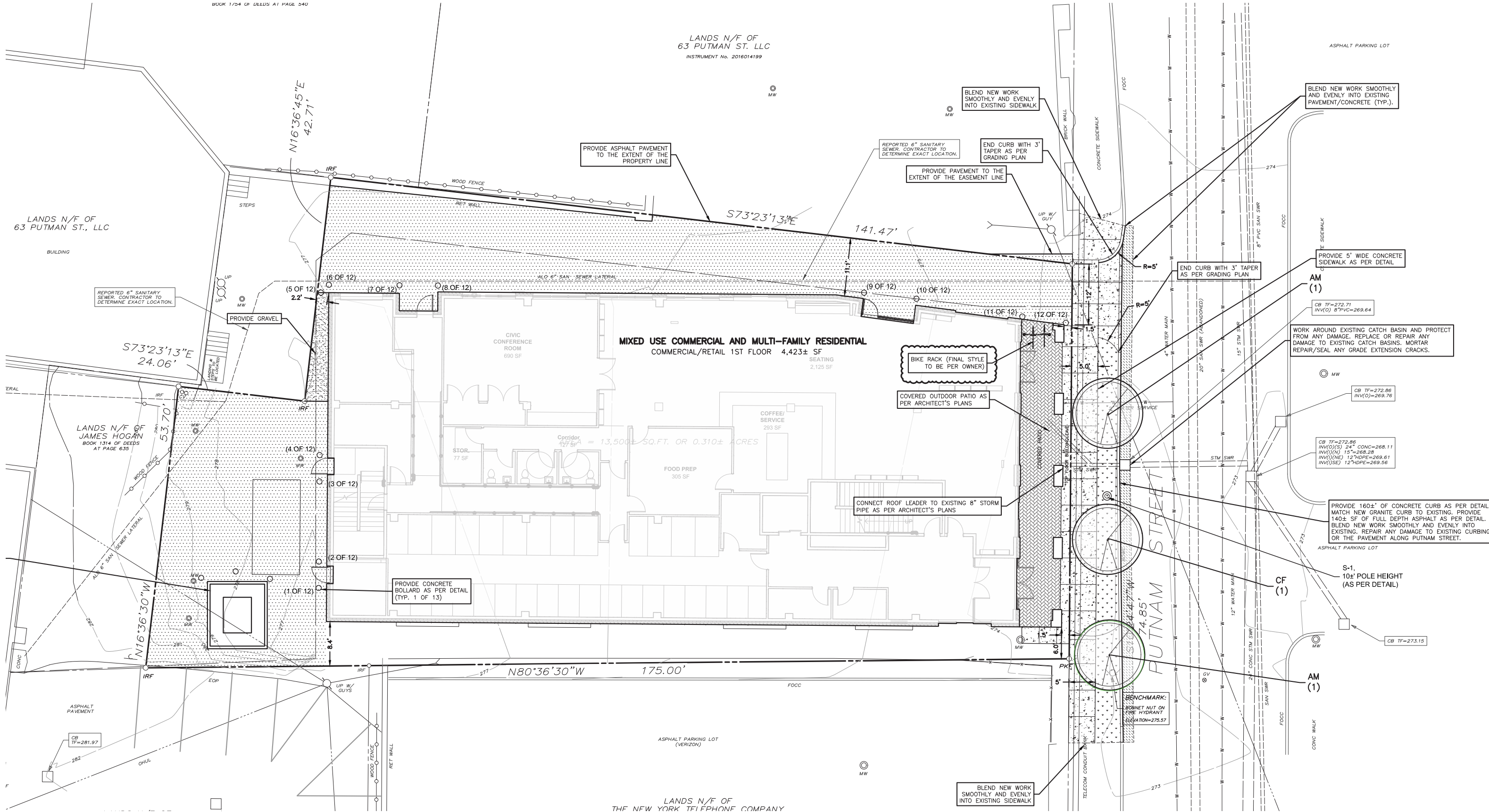
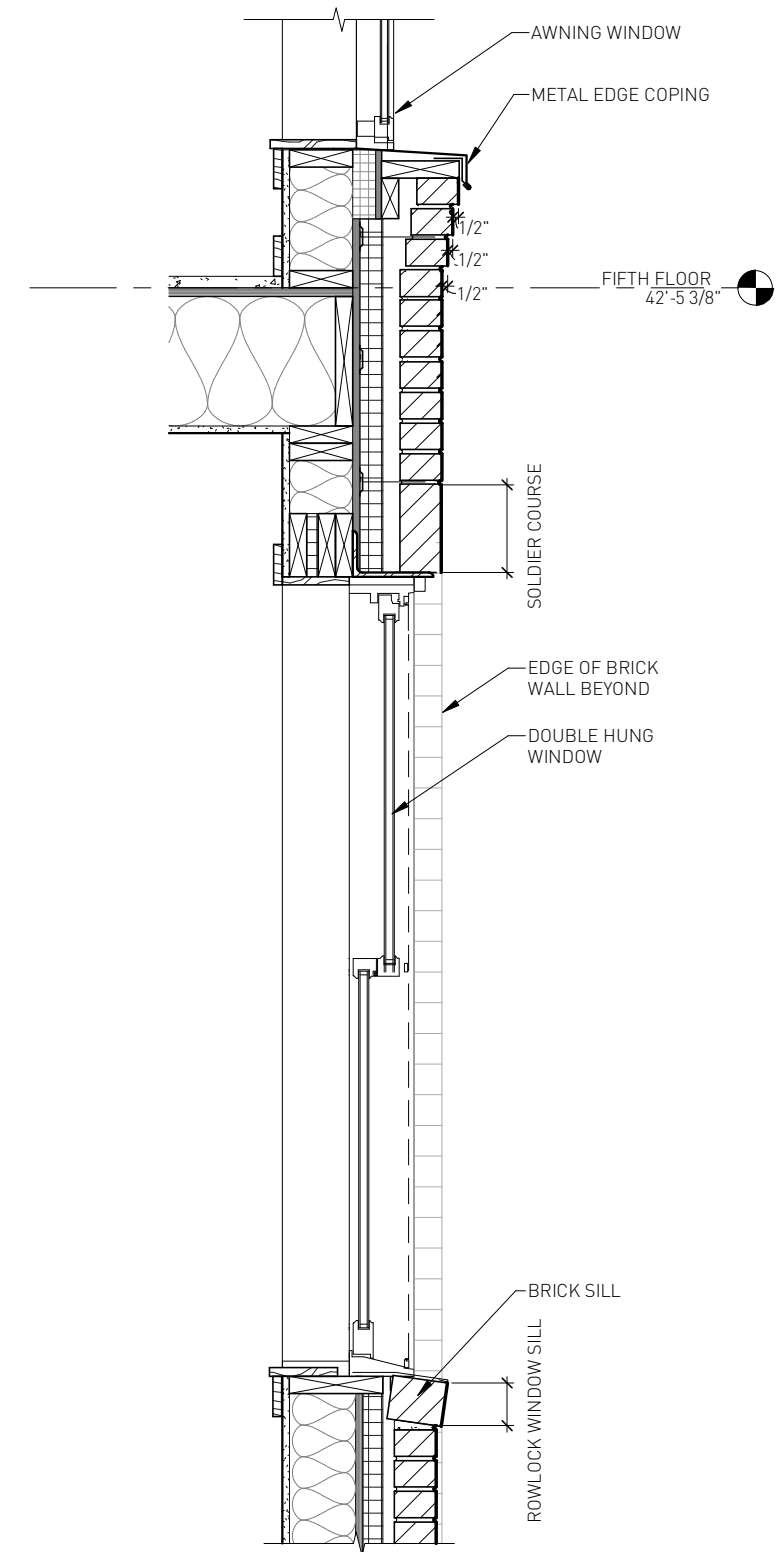
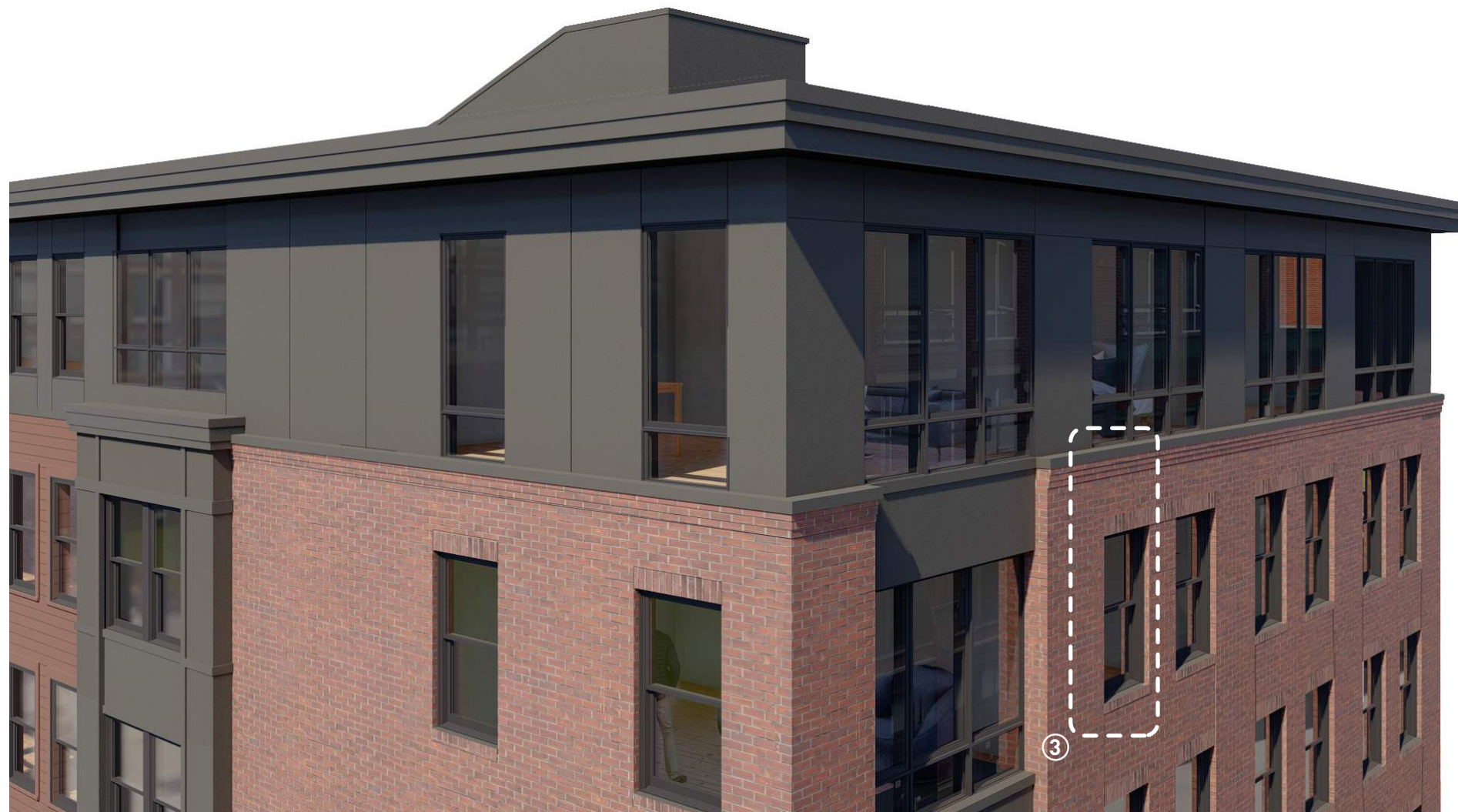




LANDS N/F OF
63 PUTMAN ST. LLC
INSTRUMENT No. 2016014199







Section Detail - Top of Brick at Penthouse and Typical Brick Window Sill
 ③

PLATE OUT DOUBLE 3450

PROJECT PROJET
SPEC TYPE
NOTES

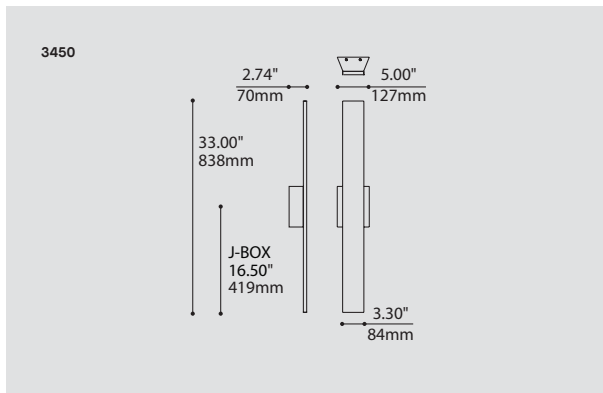


OPTIONS



WHE

BLKE



ORDERING SPECIFICATION	SPÉCIFICATION DE COMMANDE	CODE
MODEL MODÈLE		3450
3450	PLATE OUT DOUBLE	
LIGHT SOURCE SOURCE LUMINEUSE		
<small>(WATTAGE, LAMP TYPE, OTHER INFO)</small>		
LED	REGULAR OUTPUT	
LED.HO	HIGH OUTPUT	
COLOR TEMPERATURE TEMPÉRATURE DE COULEUR		
27*	2700K	
30	3000K	
35	3500K	
40	4000K	
<small>*LONGER LEAD TIME MAY APPLY, PLEASE CONTACT YOUR EUREKA REPRESENTATIVE</small>		
VOLTAGE VOLTAGE		
120V	120 VOLT	
277V	277 VOLT	
DIMMING OPTION OPTION DE GRADATION		
DV	0-10V DIMMING (120-277V)	
HOUSING BOITIER		
WHE	WHITE FINE TEXTURE	
ANTE	ANTHRACITE FINE TEXTURE	
BLKE	BLACK FINE TEXTURE	

PRODUCT CHARACTERISTICS CARACTÉRISTIQUES DU PRODUIT



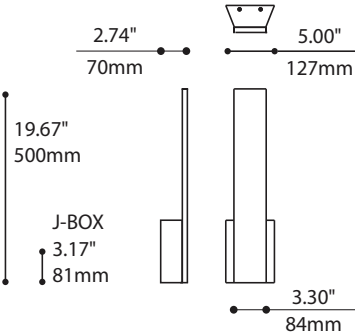
DESIGN:	Designed for use in corridors and public areas, these wall mounted indirect luminaires are outdoor versions of our Plate and are built to be rugged and withstand the elements. They are available in a classic simple version or with the extended double light source version. Both are ADA compliant and can be used indoors.
LIGHT SOURCE:	Linear LED strip with self-modulating temperature control for an optimal performance and lifetime. Available with standard 0-10V dimming.
CONSTRUCTION:	CNC machined aluminum, die-stamped galvanized steel and four levels of die-cut silicone gaskets for secure weather resistance.
DIFFUSER:	Translucent frosted acrylic.
CERTIFIED:	CSA Listed to US and Canadian safety standards; 25°C ambient and wet-locations. IP65 rated
CONCEPTION:	Conçues pour être utilisées dans les couloirs et espaces publics, ces appliques murales à éclairage indirect sont des versions extérieures de notre Plate et sont conçues pour être robustes et résister aux intempéries. Elles sont offertes en version simple et en version étendue avec source lumineuse doublée. Elles sont conformes à la norme ADA et peuvent être installées à l'intérieur.
SOURCE LUMINEUSE:	Bande lumineuse DEL avec autocontrôle de température pour une performance et durée de vie optimale. Offert avec gradation standard 0-10V.
CONSTRUCTION:	Aluminium usiné par contrôle numérique, acier galvanisé découpé et plié avec les joints d'étanchéité en silicone comprimé pour résister aux intempéries.
DIFFUSEUR:	Acrylique givré translucide.
CERTIFIÉ:	Homologué CSA aux standards UL Canada et É.-U. - Température ambiante 25°C et emplacements mouillés. Conforme à la norme IP65

PLATE OUT 3449/3450

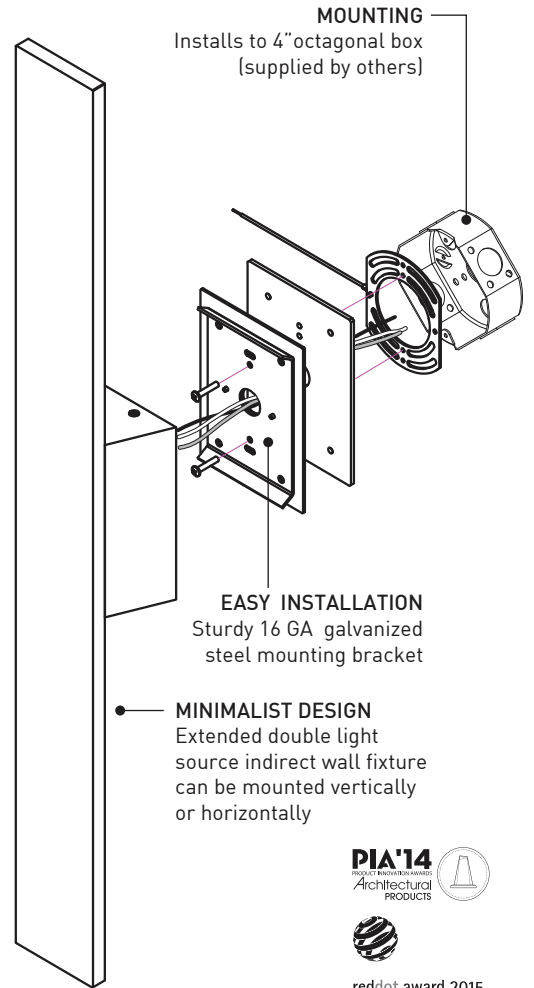
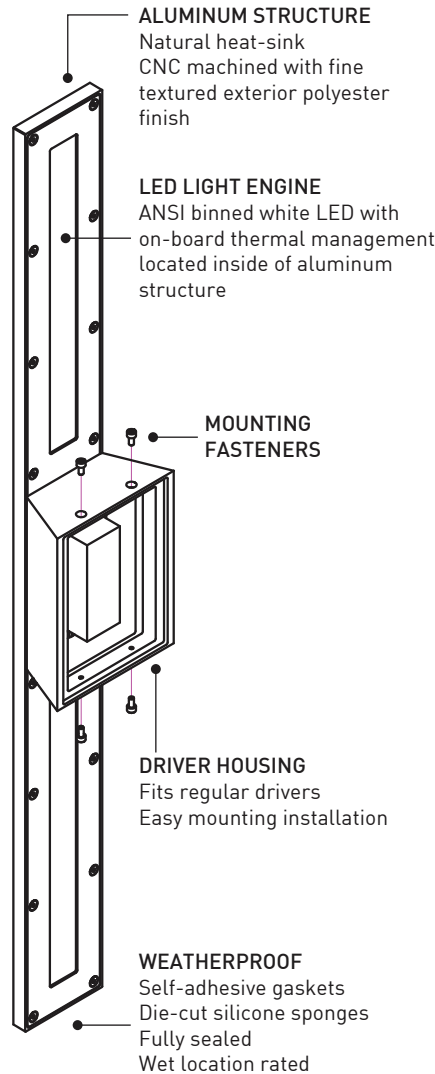
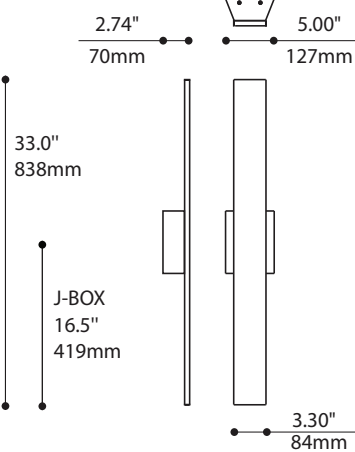
DESIGNED FOR
CONÇU POUR **IP65**

CONTACT EUREKA FOR MORE INFORMATION
CONTACTEZ EUREKA POUR PLUS D'INFORMATIONS

3449



3450



PRODUCT SPECIFICATION

3449 - REG

3449 - HO

3450 - REG

3450 - HO

PERFORMANCE

SYSTEM WATTAGE	4.9 W	7.3 W	9.9 W	14.6 W
DELIVERED LUMENS (4000K)	378LM	540 LM	757 LM	1080 LM
EFFICACY	77.1 LM/W	73.9 LM/W	76.4 LM/W	73.9 LM/W

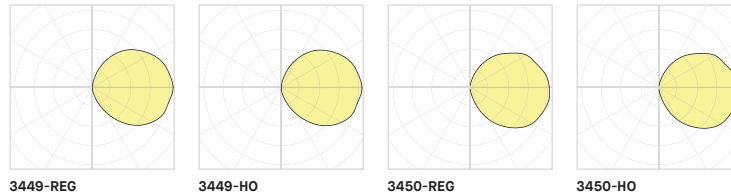
OTHER INFORMATIONS

LUMINAIRE'S WEIGHT	6.53LBS LBS / 2.97 KG	6.53LBS LBS / 2.97 KG	8.45 LBS LBS / 3.84 KG	8.45 LBS / 3.84 KG
L70 (LUMEN MAINTENANCE)	> 60 000 HRS	> 60 000 HRS	> 60 000 HRS	> 60 000 HRS

EFFICACY MULTIPLIERS

CRI	CCT	FACTOR
80+	4000K	1.00
80+	3500K	0.98
80+	3000K	0.94
80+	2700K	0.91
90+	4000K	0.88
90+	3500K	0.85
90+	3000K	0.81
90+	2700K	0.77

LIGHT DISTRIBUTION



Visit our website for warranty terms and conditions.



TECHNICAL DATA



Type IC, Air-Tight, Wet & Plenum Rated

DESCRIPTION

4" Round Recessed LED With Integral Driver In Connection Box
Commercial Grade Quality With Architectural Design

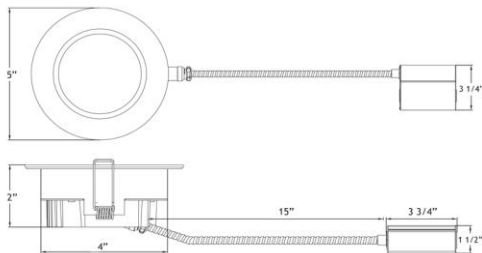
FEATURES & BENEFITS

2" Deep - Install Where Ceiling Space Is Limited
Single CCT 2700K, 3000K, 4000K, Dim to Warm or 5CCT options
CRI 90+ for True Color Rendering
Type IC Rated - No Housing Required - Save on Labour
Driver Inside Connection Box - No Junction Box Needed
Armored Cable & Metal Connectors - Open Plenum Rated

MOUNTING

Cut Hole In Ceiling And Snap Fixture In Opening With Attached Spring Clips. Ceiling Clearance Required: 2"

DIMENSIONS: ID 4" OD 5" Cut Out 4" to 4 1/4"



120V TRIAC Dimmable Driver Included



Optional 120V-347V Driver 0-10V Dimmable



Order Separately as
[model # LLL-LD1535TR](#)

ORDERING GUIDE Example: **LL4RR - 30K - WH**

	CCT	Trim Finish	
LL4RR	- xxK	- xx	
2700K	27K	WH	White
3000K	30K	BK	Black
4000K	40K		
DTW 30K-18K	3018K	Dim to Warm 3000K to 1800K	
5CCT	5CCT	User Selectable 27-30-35-40-50K	

LL4RR

4" Round Regressed Open Plenum LED 14.5W

Project: _____

Location: _____

Model #: _____ Qty: _____

Notes: _____

SPECIFICATION	
Applications	Recessed Ceiling Mount
Power	14.5 W
Single CCT Models (K)	2700 3000 4000 Dim to Warm 3000-1800K
Light Output White Trim (lm)	950 1000 1020 850
5 CCT Models (K)	2700 3000 3500 4000 5000
Light Output White Trim (lm)	860 910 960 990 960
Halogen Equivalent	90 W
Beam Angle	90°
CRI	90 +
Default Driver Input	120V AC Triac Dimmable
Optional Driver Input	120V-347V AC 0-10V Dimmable
Junction Box Wire Capacity	Max 5 No 12 AWG or 8 No 14 AWG
Power Factor	0.98
Approved Location	Insulated Ceilings, Open Plenum, Wet Locations
IP Rating	IP 54
Air Tight	Yes
Ambient Temperature	-40°F (-40°C) to +104°F (+40°C)
Projected Life	70% Light Output at 50,000 Hours
Certification	cULus, Energy Star (except DTW & 5CCT)
Warranty	10 Year Residential / 5 Year Commercial

AVAILABLE TRIMS



White



Black

ACCESSORIES

Sold Separately



Armored Low Voltage Extension FT6 / CMP rated
[10ft model # MEC10](#)



[13" Mounting Plate Flat model # MP4-2](#)



[13" Mounting Plate Flanged model # MP4](#)



[26" Flat Rough-In Plates model # RIP4](#)



[Flanged Plate with Hanger Bars model # FRP4](#)



[Goof Ring OD 5 3/4" model # GR4](#)

COMPLIANCE



**Type IC
Air-Tight
Open Plenum**

Lotus LED Lights USA

250 H Street # 301, Blaine WA 98230 tel 360-200-5500
Hainesport NJ, Naples FL, Vancouver WA

www.LotusLEDLights.com

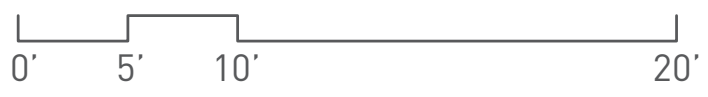
mailing addresses
warehouses

Lotus LED Lights CANADA

1080 Cliveden Ave # 6, Delta BC V3M 6G6 tel 604-538-3090
Delta BC & Mississauga ON



Concept Putnam Street Elevation





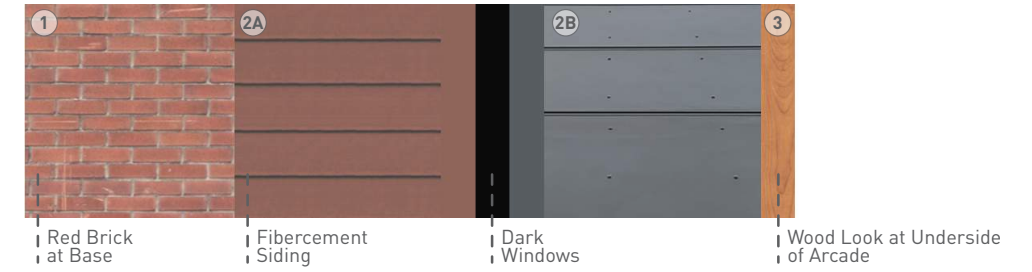
Concept Putnam Street Elevation



- ① Basis of Design: Continental Brick Company
Profile: Std. 440 Mod.
- ②A Basis of Design: Allura Lap - Smooth
Color: Toile Red
- ②B Basis of Design: Allura Panel - Smooth
Color: Iron Ore
- ③ Basis of Design: Trespa Meteor
Color: Montreux Amber - Satin

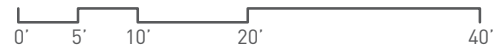


Concept South Elevation



- ① Basis of Design: Continental Brick Company
Profile: Std. 440 Mod.
- ②A Basis of Design: Allura Lap - Smooth
Color: Toile Red
- ②B Basis of Design: Allura Panel - Smooth
Color: Iron Ore
- ③ Basis of Design: Trespa Meteon
Color: Montreux Amber - Satin

Concept West Elevation



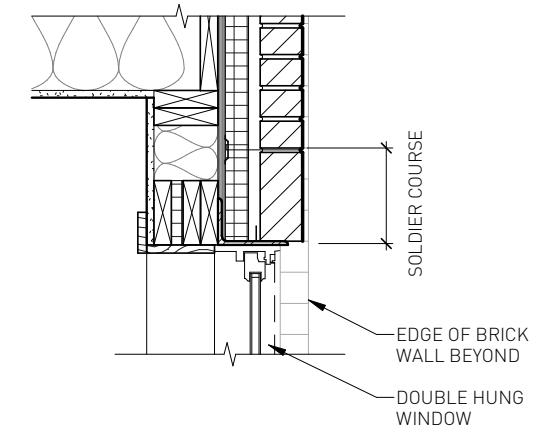
Concept North Elevation



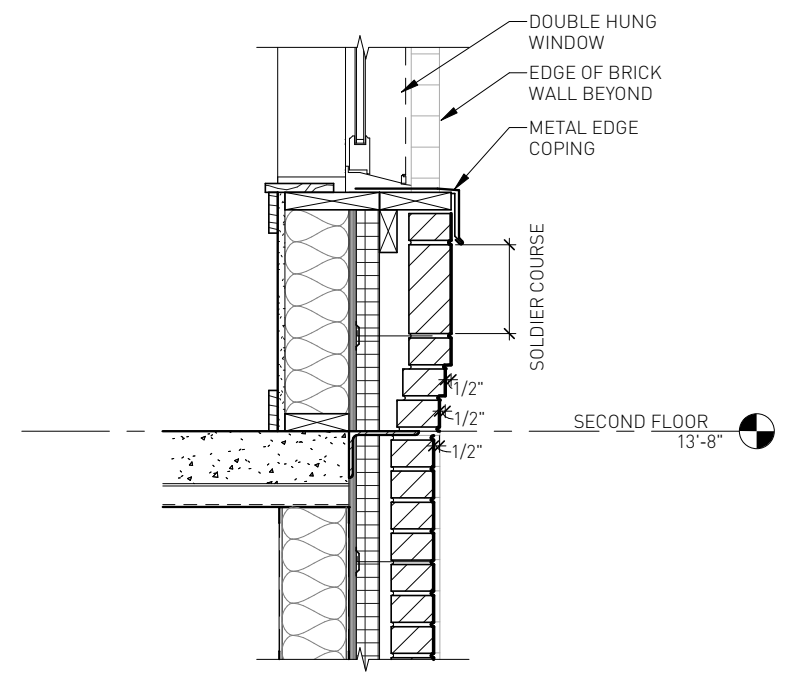




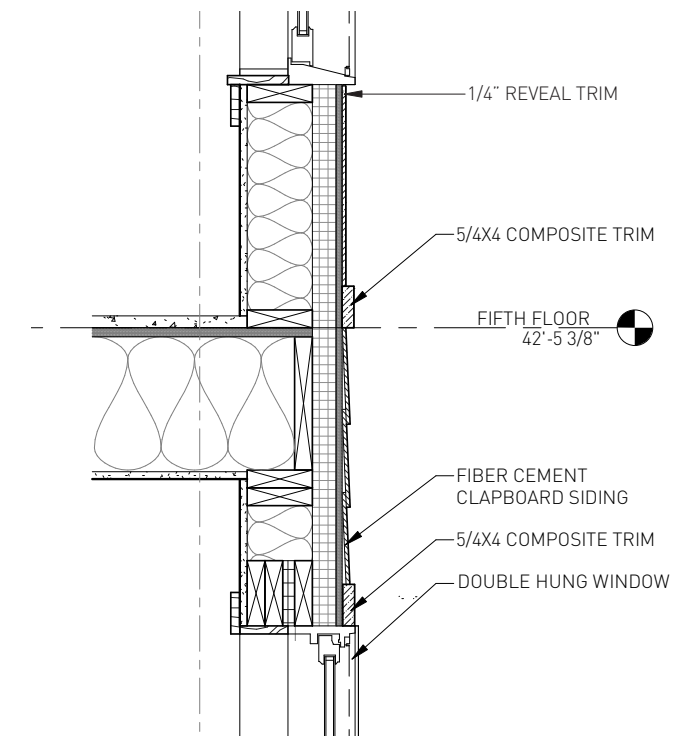




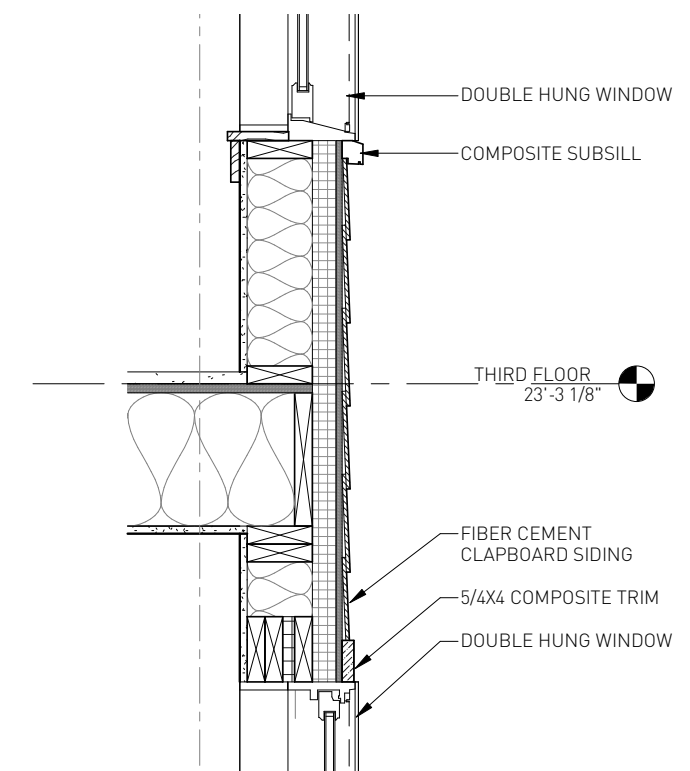
② Section Detail - Typical Brick Window Head



① Section Detail - Top of Brick at Arcade

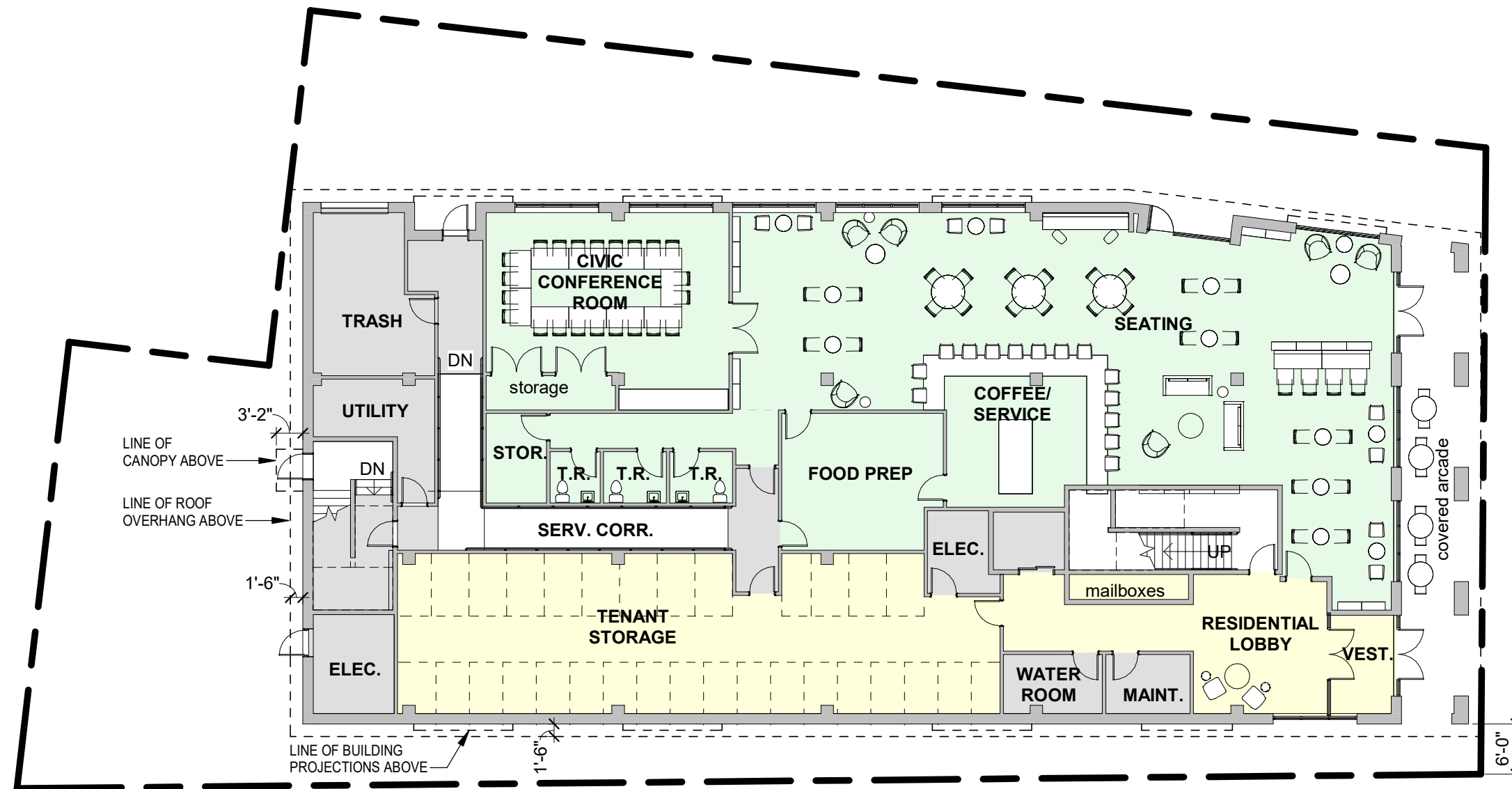


⑤ Section Detail - Siding Transition Detail

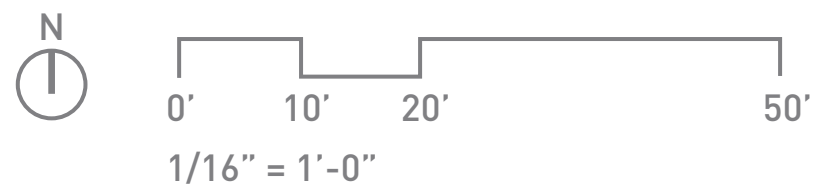
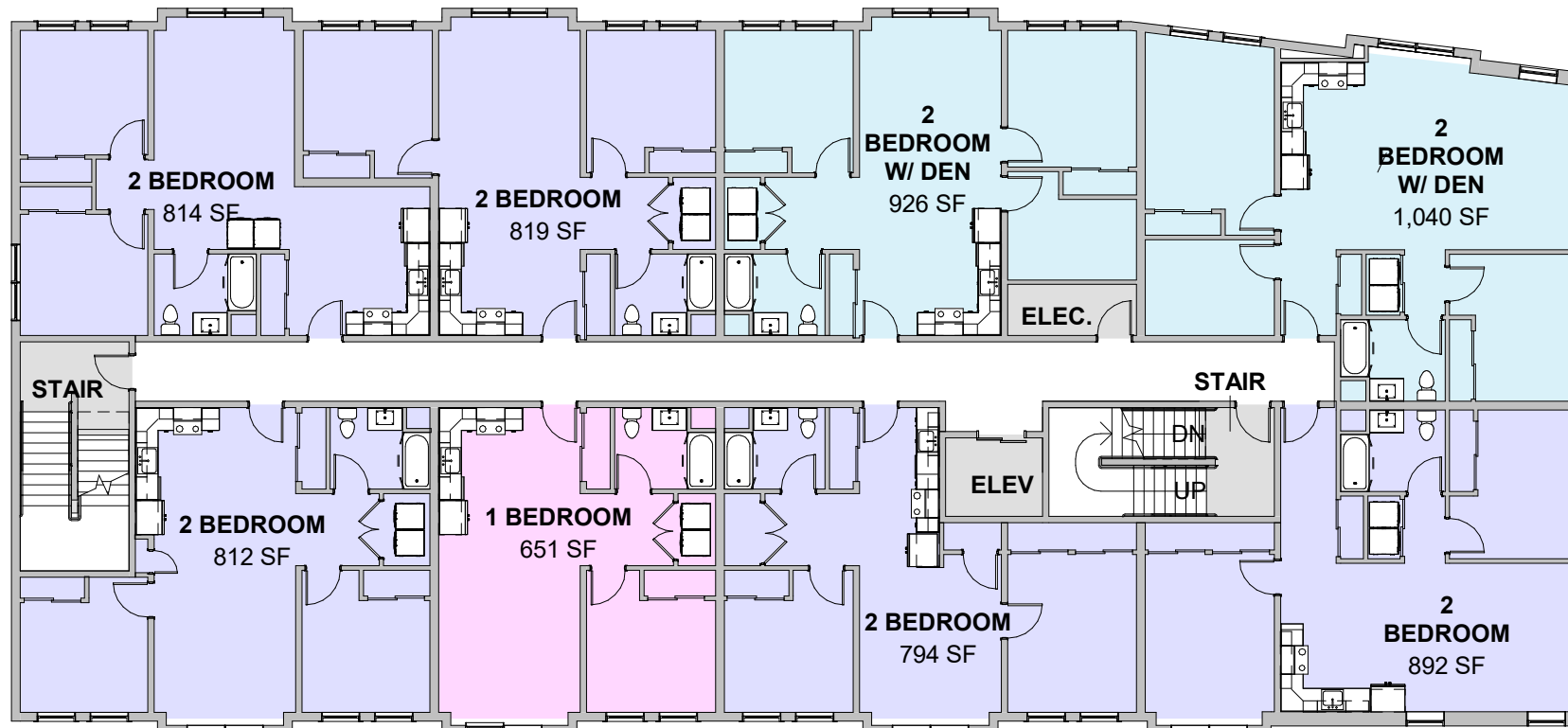


④ Section Detail - Typical Lap Siding Window Head/Sill

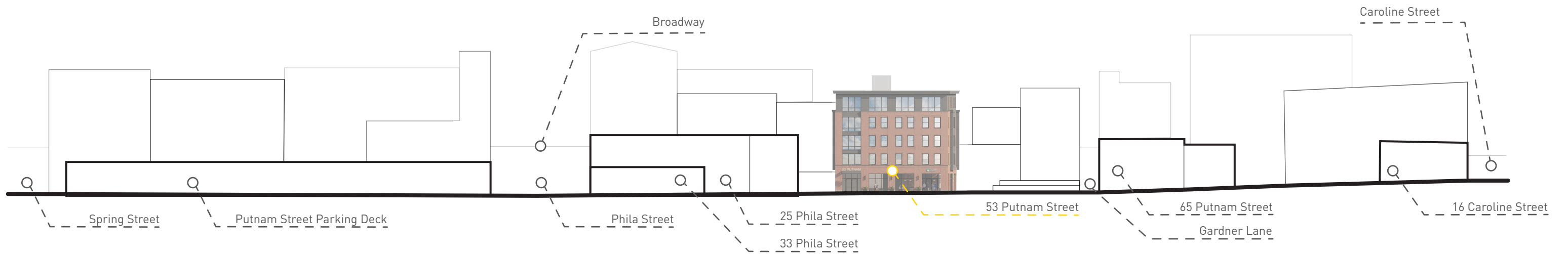
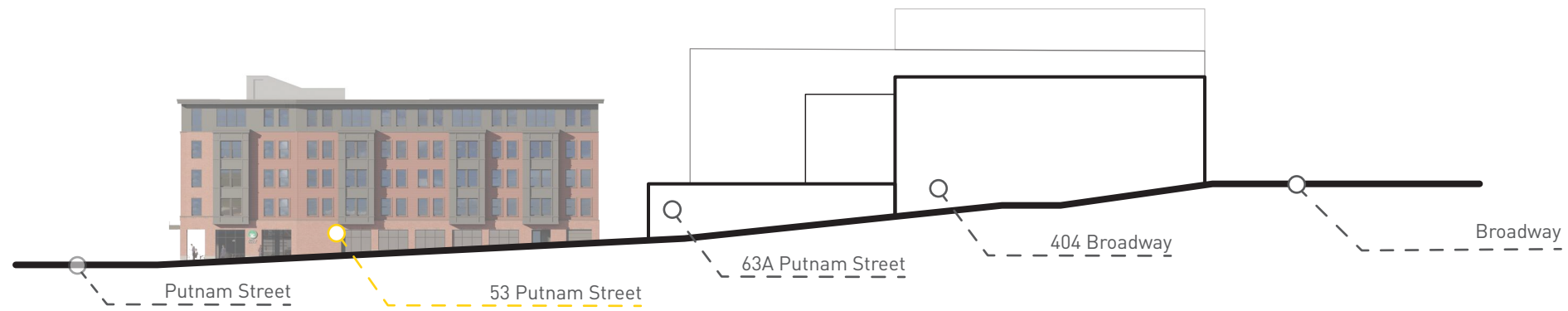




APARTMENT UNIT MATRIX						
	1 BEDROOM	2 BEDROOM	2 BEDROOM W/ DEN		TOTAL	GROSS SF
1ST FLOOR	0	0	0		0	8,222
2ND FLOOR	1	5	2		8	8,742
3RD FLOOR	1	5	2		8	8,742
4TH FLOOR	1	5	2		8	8,742
5TH FLOOR	1	5	2		8	8,742
TOTAL	4	20	8		32	43,190
	12%	63%	25%			







*Existing building elevations are approximate, heights are based on Pictometry data

